

LRES3026PF-OCP

—OCP3.0 Dual-port 100G QSFP28 Ethernet Network Adapter (Intel Chip E810 Based)

Overview



LRES3026PF-OCP is an OCP3.0 SFF dual port 100G Ethernet network adapter developed by Shenzhen Lianrui Electronics Co., LTD based on Intel E810 chip. This is complemented by hardware-accelerated packet processing extensions and the introduction of application queuing technology, which enables NVMe support for Fabric TCP, as well as optional support for RDMA's iWARP and RoCEv2 capabilities.

The Ethernet optical fiber network card (LRES3026PF-OCP) launched by Shenzhen Lianrui Electronics Co., LTD. The application queue technology function of the optical fiber network card ensures that each application can request its own queue, that is, the data between each other is no longer confused, with up to 100Gbps interface speed, It can be widely used in network devices such as data center service, cloud computing and storage with high throughput and can handle various workloads. In practical operation, it can reduce application delay and improve throughput by using program queue.

The fiber network card provides scalable ADQ technology to improve the performance scalability and predictability of critical workloads by dedicating specific resources to critical workloads. ADQ implements application-specific data control, information, and rate limiting using optimized application thread to device data paths.

Key Features

1. An OCP3.0 SFF dual-port 100G Ethernet network adapter;
2. NVMe support for Fabric TCP via technology, as well as optional support for RDMA's iWARP and RoCEv2 features;
- 3, the application queue technology function to ensure that each application can request belongs to its own queue, with up to 100Gbps transmission speed;
- 4, can be widely used in high-throughput data center service, cloud computing, storage and other network equipment can handle a variety of workloads, in the actual operation combined with the use of program queue can reduce application delay and improve throughput;
5. Using EPCT's multi-function port configuration technology, the adapter can be configured for multiple rates.

Specifications

Controller	Intel E810
Baffle Height	SFF
Power Consumption	DAC, 19.2W; Fiber, 27.1W
System Support	Windows Server 2016 R2/2019 R2/2022 R2
	Linux SLES 12.x or later
	CentOS / RHEL 7.x or later
	Ubuntu 16.x or later
	FreeBSD 11.x/12.x or later
	Linux Stable Kernel version 3.10.x/4.x or later
Bus Type	OCP3.0 SFF
Data rate	10/25/50/100GbE
Connector	2*25G SFP28

Technical Features

Protocol Support	IEEE 802.3bj 100GBASE Ethernet IEEE 802.3x Full Duplex and flow control IEEE 802.3az Energy Efficient Ethernet (EEE) IEEE 802.3AS IEEE 802.1Q VLAN IEEE 802.1Qaz IEEE 802.1Qbb IEEE 802.1x IEEE 802.1bd IEEE1588 v1&v2
PXE/UEFI	Yes
DPDK	Yes

Jumbo Frames	Yes
iSCSI	No
Jumbo Frames	Yes
FCoE	No
RDMA (iWARP、RoCE v2)	Yes
Network virtualization	SR-IOV, VxLAN, GENEVE, GRE

Environment Features

Operating Temperature	0 °C to 60 °C (32 °F to 140 °F)
Storage Temperature	-40 °C to 70 °C (-40 °F to 158 °F)
Storage Humidity	Maximum: 90% non-condensing relative humidity at 35 °C

Physical Features

Size(mm)	115*76
Weight(g)	*

LED Indicators

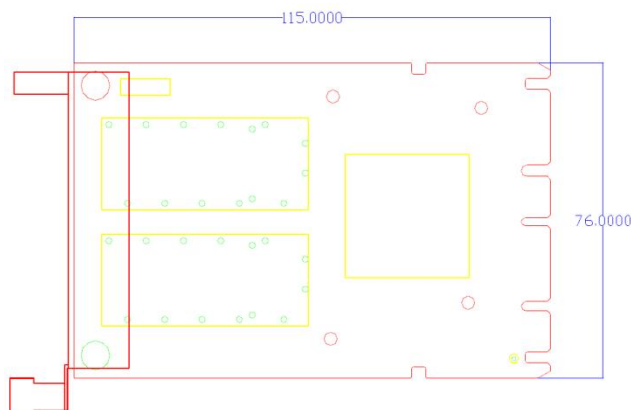
LED Indicators	100Gbps, Yellow Blink + Green Link (For reference)
	25/50Gbps, Green Blink + Green Blink (For reference)
	10Gbps, Yellow Blink (For reference)

Order Information

P/N	Description
LRES3026PF-OCP	OCP3.0 Dual-port 100G QSFP28 Ethernet Network Adapter (Intel E810 Chip Based)

PS: Above details are only for reference, if there is any change, no prior notice.

Product Structure



1. Heat sink
2. 2*100G QSFP28 Connector
3. OCP3.0 SFF Bus

PS: Above details are only for reference, if there is any change, no prior notice.

Companion Products

Fiber NIC

- § LR-LINK PCI 100FX Desktop Adapter
- § LR-LINK PCIe 100FX Desktop Adapter
- § LR-LINK PCI 1000BASE-SX/LX Desktop Adapter
- § LR-LINK PCIe 1000BASE-SX/LX Desktop Adapter
- § LR-LINK PCIe 1000BASE-SX/LX Server Adapter
- § LR-LINK PCIe 10GBASE-SX/LX Server Adapter
- § LR-LINK PCIe 25GBASE-SX/LX Server Adapter
- § LR-LINK PCIe 40GBASE-SX/LX Server Adapter
- § LR-LINK PCIe 100GBASE-SX/LX Server Adapter

Copper NIC

- § LR-LINK PCI 10/100Mbps Desktop Adapter
- § LR-LINK PCIe 10/100Mbps Desktop Adapter
- § LR-LINK PCI 10/100/1000Mbps Desktop Adapter
- § LR-LINK PCIe 10/100/1000Mbps Desktop Adapter
- § LR-LINK PCIe 10/100/1000Mbps Server Adapter
- § LR-LINK PCIe 100/1G/10Gbps Server Adapter
- § LR-LINK PCIe 1G/2.5G/5G/10Gbps Server Adapter

Download Drivers

To get the drivers, please visit us at <http://www.lr-link.com/support/driver.html>.

Product Quick Guide

To know the network card basic knowledge to choose the suitable NIC you need, please visit us at: <http://www.lr-link.com/productchoose.html>.

Customer Support

LR-LINK customer Support Services offers a broad selection of programs including phone support and warranty service. For more information, contact us at Service and availability. <http://www.lr-link.com/contactus.html>

Shenzhen Lianrui Electronics Co.,LTD.

Shenzhen Lianrui Electronics Co.,Ltd is an efficient Ethernet adapter design company with independent research and

development, using Intel, Net-swift, Tehuite, Broadcom, Realtek and other manufacturers Ethernet controller chips as a supplier of NIC, our company's independent R & D design team, manufactured by our company workshop, and then sell.

Declaration

Our products specifications come from modifying the chip manufacturer's specifications released. Product features, technical parameters, technology right, intellectual property rights and brand names etc. mentioned in specifications are just referenced only. There is no infringement meaning. If there is any important and sensitive content related, please contact our Lianrui company, we'll delete them, Thank you.

SHENZHEN LIANRUI ELECTRONICS CON., LTD.

LR-LINK

ADD: C4 Bldg., Xintang Industry Zone, Baishixia Fuyong Town, Baoan District Shenzhen China

14 / F, Building T10, Ocean New World, Shenglong Rd Longcheng Street, Longgang District, Shenzhen, Guangdong, China

Tel: +86(0)755-33671531 33671533 Fax: +86(0)755-29082065

Product Sales service@lr-link.com

Technical Support support@lr-link.com

WEB www.lr-link.com

Copyright © Shenzhen Lianrui Electronics CO., LTD, 2006-2022. All rights reserved

reserved