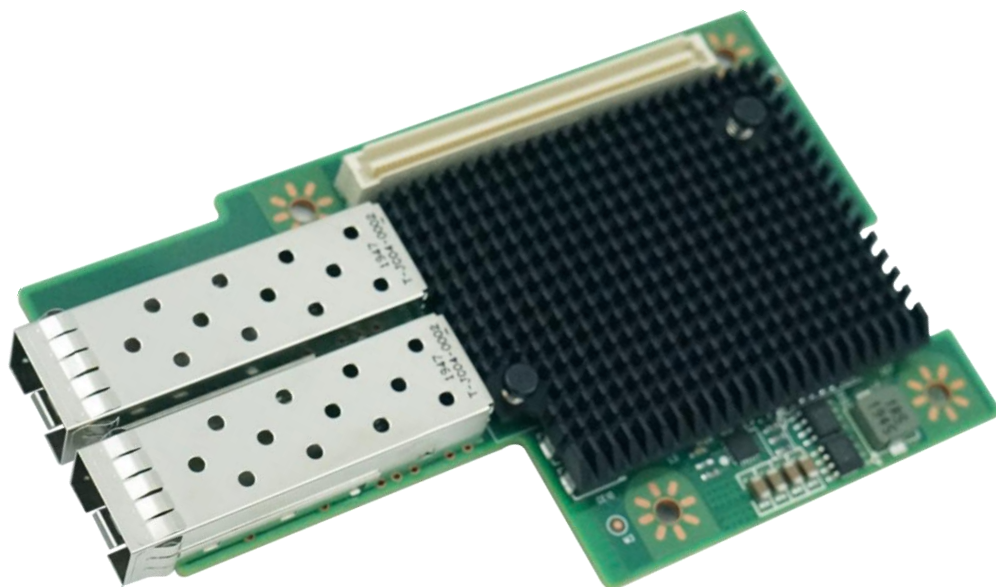


LRES3001PF-OCP

-- OCP Type-1 Dual-Port 10G SFP+ Ethernet Server Adapter (Intel 82599 Based)

Overview



LRES3002PF-OCP is an OCP Type-1 10 Gigabit dual-port SFP+ Ethernet server adapter developed by Shenzhen Lianrui Electronics Co., Ltd. based on Intel 82599. The design of this server adapter card is based on OCP-oriented devices. .

The server adapter comes with two fully integrated 10 Gigabit Ethernet Media Access Controller (MAC) and SFP+ ports. In addition to the functions of managing the Ethernet MAC and PHY layers, it also exchanges data and links. , physical layer, logical layer and packet traffic management. It can also share tasks for hosts through hardware acceleration, such as TCP/UDP/IP verification, computing tasks, and TCP segmentation.

The LRES3002PF-OCP adapter card provides hardware-enhanced features such as intelligent queuing technology optimized for multi-core processors, with on-chip support for load balancing for higher levels of 10 Gigabit Ethernet scalability. Providing Intel Virtualization Technology (VTc), including network level, can significantly improve overall system performance in a virtual server environment. Intel VT-c technology includes several hardware optimization features that dramatically reduce I/O bottlenecks, increase throughput and reduce latency. Intel VT-c's Component Virtual Machine Device Queue (VMDq) significantly improves performance and

Key Features

- Dual SFP+ Connectivity
- OCP Connectivity
- Network Virtualization
- The first China-Made Chip master control solution
- IEEE 802.1q VLAN support with VLAN tag insertion
- Low profile & full-height bracket

Specifications

Controller	Intel 82599
Baffle Height	*
Fiber Type	10GBase-SR、10GBase-LR、10GBase-Cu
Power Consumption	10.7W
System Support	Windows 7/8/8.1/10
	Windows Server 2008 R2/2012 R2/2016 R2/2019 R2
	Linux SLES 11/12 or later
	CentOS / RHEL 5.x/6.x or later
	Ubuntu 14.04/16.10 or later
	FreeBSD 9,10 or later
	Linux Kernel version 2.6.x , 3.x , 4.x or later
	VMware ESX/ESXi 4.x,5.x,6.x or later
Bus Type	OCP Type-1
Data Rate Supported per port	10000MbE
Connector	2*SFP+

Technical Features

Standards Compliant	IEEE 802.3ae 10GBase-X IEEE 802.3z 1000BASE-X Gbit/s Ethernet IEEE 802.3x Full Duplex and flow control IEEE 802.3an IEEE 802.3az Energy Efficient Ethernet (EEE) IEEE 802.1Q VLAN IEEE 802.3az Energy Efficient Ethernet IEEE 802.1qbb IEEE 802.3as IEEE 1588
iSCSI	Yes
WoL	No
Jumbo Frames	Yes
DPDK	Yes
PXE	Yes
FCoE	No
VMDq、SR-IOV	Yes
IPsec	Yes

Environment Features

Operating Temperature	0 °C to 55 °C (-13 °F to 158 °F)
Storage Temperature	-40 °C to 70 °C (-40 °F to 158 °F)
Storage Humidity	Maximum: 90% non-condensing relative humidity at 35 °C

Physical Features

Size(mm)	110*68**
Weight(g)	*

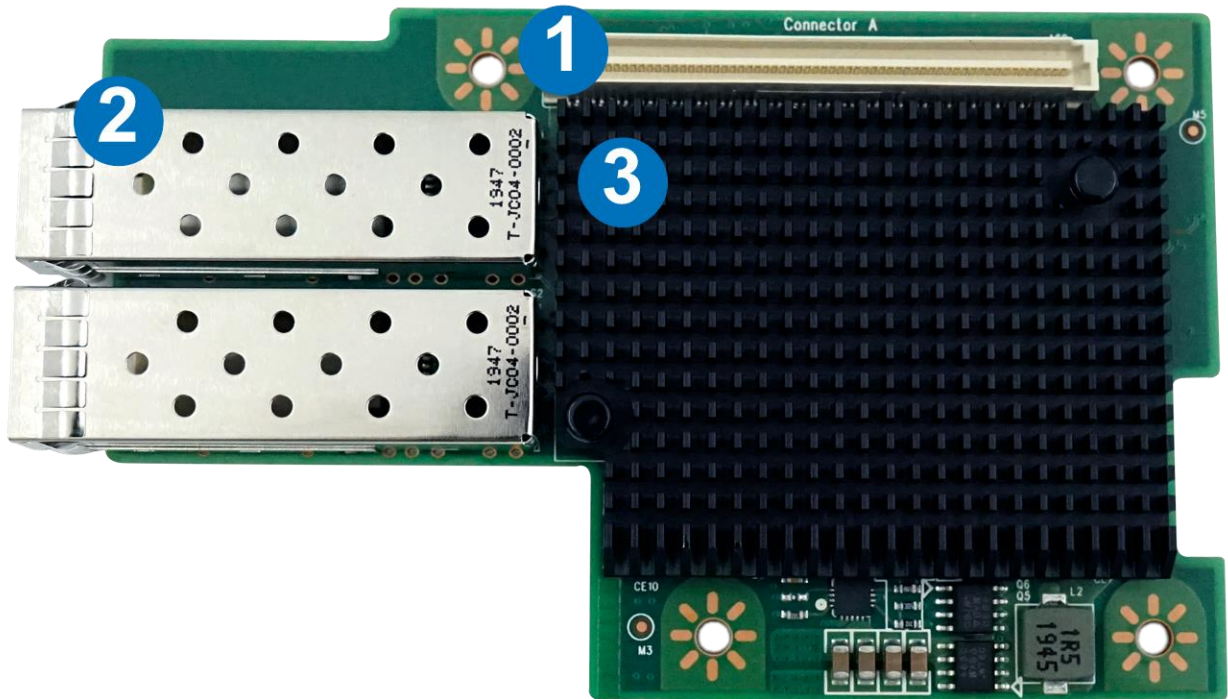
LED Indicators

LED Indicators	Green Link + Green Blink
----------------	--------------------------

Order Information

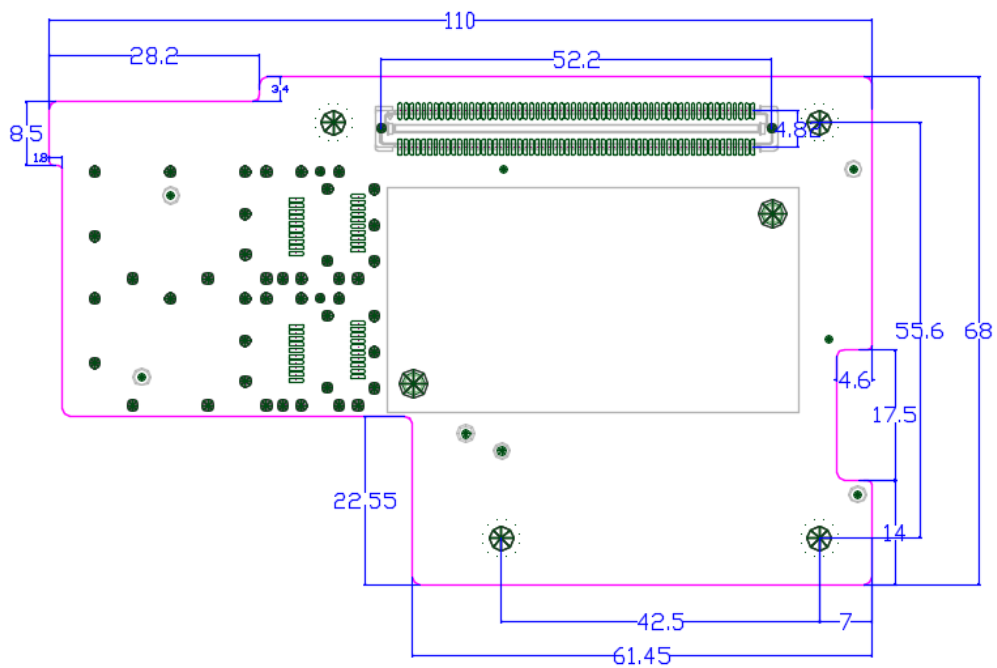
P/N	Description
LRES3002PF-OCP	OCP Type-1 Dual-Port 10G SFP+ Ethernet Server Adapter (Intel 82599 Based)

Product Structure



1. OCP Connector
2. 2*10G SFP+ Connector
3. Heat sink

PS: Above details are only for reference, if there is any change, no prior notice.



PS: Above details are only for reference, if there is any change, no prior notice.

Companion Products

Fiber NIC

- § LR-LINK PCI 100FX Desktop Adapter
- § LR-LINK PCIe 100FX Desktop Adapter
- § LR-LINK PCI 1000BASE-SX/LX Desktop Adapter
- § LR-LINK PCIe 1000BASE-SX/LX Desktop Adapter
- § LR-LINK PCIe 1000BASE-SX/LX Server Adapter
- § LR-LINK PCIe 10GBASE-SX/LX Server Adapter
- § LR-LINK PCIe 25GBASE-SX/LX Server Adapter
- § LR-LINK PCIe 40GBASE-SX/LX Server Adapter
- § LR-LINK PCIe 100GBASE-SX/LX Server Adapter

Copper NIC

- § LR-LINK PCI 10/100Mbps Desktop Adapter
- § LR-LINK PCIe 10/100Mbps Desktop Adapter
- § LR-LINK PCI 10/100/1000Mbps Desktop Adapter
- § LR-LINK PCIe 10/100/1000Mbps Desktop Adapter
- § LR-LINK PCIe 10/100/1000Mbps Server Adapter
- § LR-LINK PCIe 100/1G/10Gbps Server Adapter
- § LR-LINK PCIe 1G/2.5G/5G/10Gbps Server Adapter

Download Drivers

To get the drivers, please visit us at <http://www.lr-link.com/support/driver.html>.

Product Quick Guide

To know the network card basic knowledge to choose the suitable NIC you need, please visit us at: <http://www.lr-link.com/productchoose.html>.

Customer Support

LR-LINK customer Support Services offers a broad selection of programs including phone support and warranty service. For more information, contact us at Service and availability. <http://www.lr-link.com/contactus.html>

Shenzhen Lianrui Electronics Co.,LTD.

Shenzhen Lianrui Electronics Co.,Ltd is an efficient Ethernet adapter design company with independent research and development,using Intel,Net-swift,Tehuite,Broadcom,Realtek and other manufacturers Ethernet controller, developed by our company's independent R & D design team,manufacturedby our company workshop, and then sell.

Declaration

Our products specifications come from modifying the chip manufacturer's specifications released. Product features, technical parameters, technology right, intellectualproperty rights and brand names etc.mentioned in specifications are just referenced only.There is no infringement meaning.If there is any important andsensitive content related, please contact our Lianrui company, we'll delete them, Thank you.

SHENZHEN LIANRUI ELECTRONICS CON.,LTD.

ADD:C4 Bldg.,Xintang Industry Zone,Baishixia FuyongTown,Baoan District Shenzhen China

Tel:+86(0)755-33671531 33671533 Fax:+86(0)755-29082065

Product Sales sales@lr-link.com

Technical Support support@lr-link.com

WEB www.lr-link.com



Copyright © Shenzhen Lianrui Electronics CO.,LTD,2006-2019. All rights reserved