

## LRES2013PT-POE

— PCIe x4 Quad port Multifunction Gigabit Ethernet Frame Grabber (Intel I350 Based)

### Overview



LRES2013PT-POE is a PCI Express x4 Quad port Gigabit active digital I/O multi-function Ethernet network adapter independently developed by Shenzhen Lianrui Electronics Co., Ltd. based on Intel I350 chip solution. It is also compatible with PCIe x8 and x16 channels. .

This adapter card design is mainly used in industrial field visual inspection servers and equipment, visual field clients, fast mobile Ethernet data transmission equipment, etc. It is also suitable for ordinary servers, developed on the original POE image acquisition card. The POE monitoring function can perform on-off control and monitoring of voltage, current, temperature and other parameter functions of the POE, so that the great place facilitates the express delivery of information such as the working state of the device, thereby saving a large amount of human and material resources.

The network adapter features integrated hardware acceleration to perform TCP/UDP/IP checksum offloading and TCP segmentation tasks. The host processing technology can offload the accelerator, and the host processing technology can offload the accelerator and release the CPU resources to free up more CPU resources to process other applications. This adapter is the ideal solution for deploying multiple networks and deploying critical network applications and environments on high-performance servers.

Developed on the Intel I350 Ethernet MAC+PHY (Media Access Controller and Physical Interface Transceiver) controller, the LRES2013PT-POE allows all four ports to be fully duplexed in a Gigabit Ethernet network connection. The working mode works to adapt to high-performance network communication, which can expand bandwidth through link aggregation and save PCI Express channel resources without occupying bus bandwidth.

## Key Features

1. Single-port PoE output power consumption up to 30W, providing an external 4-Pin power supply and supply interface;
2. Adaptive output power consumption required by external devices;
3. The larger heat sink can effectively solve the heat dissipation problem of the adapter in the case of poor heat dissipation environment & effectively ensure the stable operation of the adapter card for a long time;
4. Carefully selected the RJ45 connector with thickened immersion gold to ensure a more secure & reliable connection;
- 5, 4 8-pin RJ45 connector design can save the motherboard's valuable PCIe slot resources;
6. POE protection & automatic power prediction to protect POE equipment;
7. Provide easy-to-use tools & API functions for POE power management;
8. Monitor the working temperature of the network card (POE & NIC);
9. support 4 isolated digital input-output (2500Vdc isolation voltage);
10. Digital inputs and outputs can be set to linkage, and the delay between input & output can be adjusted by the tool software.

## Specifications

Controller	Intel I350
Transmission medium	Copper
Copper Type	Cat 5E & Cat6 or higher, 1000Base-T up to 100m (POE power min requirement Cat5)
	Cat 5E & Cat6 or higher, 100Base-T up to 100m (POE power min requirement Cat5)
Baffle Height	Full-height bracket
Power Consumption	5.0W
PoE Power (max)	30W / port
I/O Input (DC)	+12V~+24V
I/O Output (DC)	+24V
I/O Output (DC)	5A
PoE Voltage	48V
OS Support	Windows XP/7/8/8.1/10
	Windows Server 2003 R2 /2008 R2 /2012 R2 /2016 R2 /2019 R2
	Linux Stable Kernel version 2.6.x/3.x/4.x or later
	Linux CentOS/RHEL 6.5 / 7.x or later
	Ubuntu 14.x/15.x/16.x or later
VMware ESX/ESXi 4.x/5.x/6.x or later	
Bus Type	PCIe v2.1 x4, compatible with x8 , x16
Data rate per port	10/100/1000Mbps
Connector	4*1G 8-Pin RJ45 Connector

## Technical Features

Standards compliant	IEEE 802.3ab 1000BASE-T Gigabit Ethernet IEEE 802.3u 100BASE-TX Fast Ethernet IEEE 802.3af Power over Ethernet IEEE 802.3at Power over Ethernet enhancements IEEE 802.1Q VLANs IEEE 802.3x Full Duplex and flow contro IEEE 802.3az - Energy Efficient Ethernet (EEE)
iSCSI	No
WoL	No
Jumbo Frames	Yes
DPDK	Yes
PXE	No
FCoE	No
PCI-SIG/SR-IOV	Yes

## Environment Features

Operating Temperature	0°C to 55°C (32°F to 131°F)
Storage Temperature	-40°C to 70°C (-40°F to 158°F)
Storage Humidity	Maximum: 90% non-condensing relative humidity at 35°C
Certification	FCC, CE, RoHS

## Physical Features

Size (mm ±0.5mm)	158*120*12
Weight (g ±2g)	*

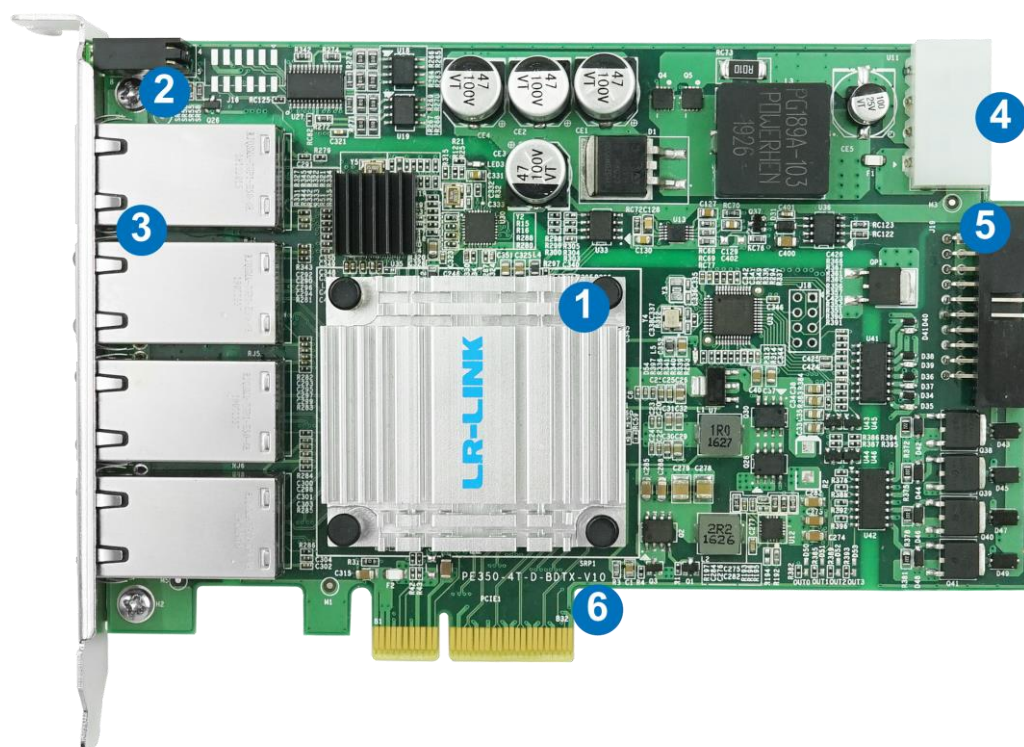
## LED Indication

LED indication	PoE, Green bright + Green flashing
	1000M, Orange bright + Green flashing
	10M/100M, Green flashing
	I/O indication, Orange + Green

## Order information

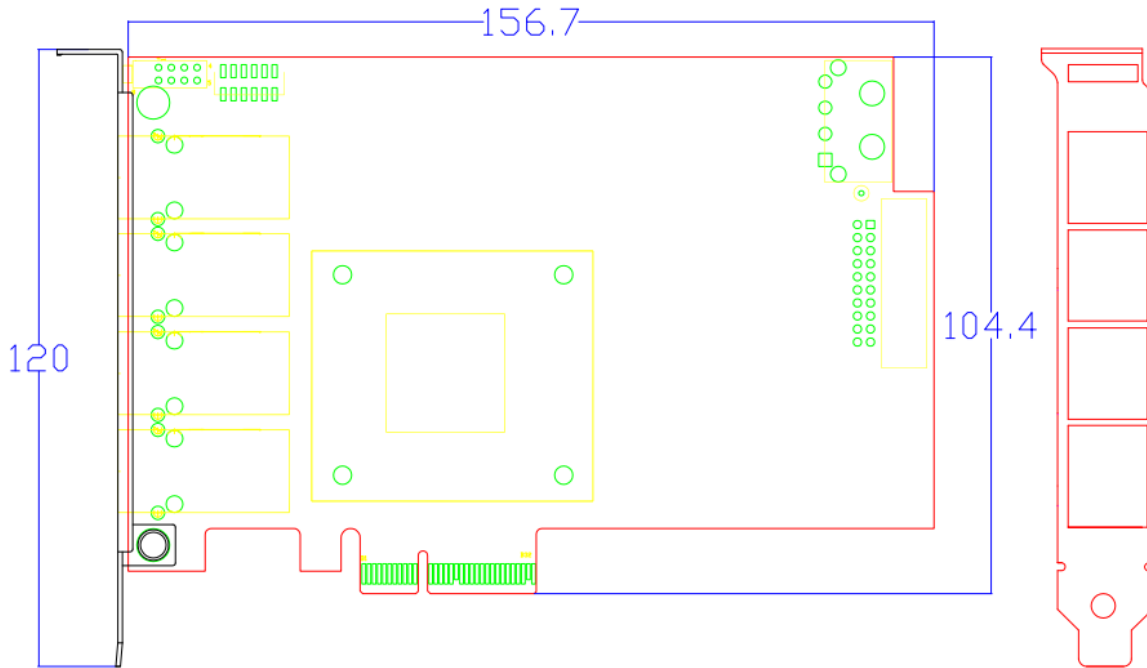
P/N	Description
LRES2013PT-POE	PCIe x4 Quad port Multifunction Gigabit Ethernet Frame Grabber 4*RJ45 (Intel I350 Based)

## Product Structure

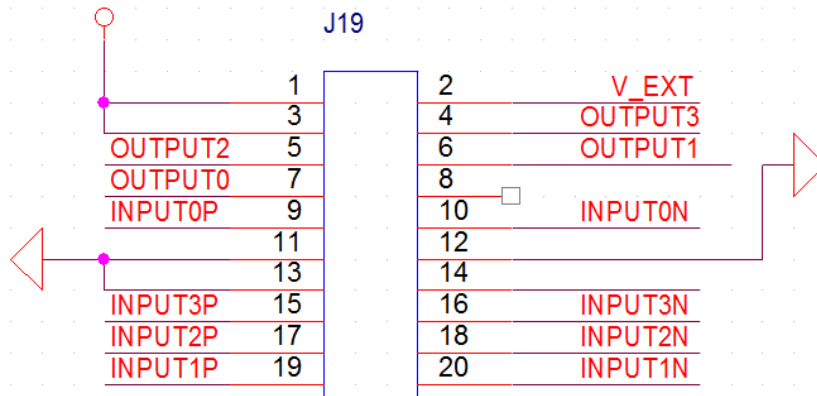


- 1、Heat sink
- 2、POE indication
- 3、4\*1G 8-Pin RJ45 connector
- 4、4-Pin +12V DC interface
- 5、I/O interface
- 6、PCIe x4 Bus

PS: Above details are only for reference, if there is any change, no prior notice.



I/O Pin Symbol



## Companion Products

### Fiber NIC

- § LR-LINK PCI 100FX Desktop Adapter
- § LR-LINK PCIe 100FX Desktop Adapter
- § LR-LINK PCI 1000BASE-SX/LX Desktop Adapter
- § LR-LINK PCIe 1000BASE-SX/LX Desktop Adapter
- § LR-LINK PCIe 1000BASE-SX/LX Server Adapter
- § LR-LINK PCIe 10GBASE-SX/LX Server Adapter
- § LR-LINK PCIe 25GBASE-SX/LX Server Adapter
- § LR-LINK PCIe 40GBASE-SX/LX Server Adapter
- § LR-LINK PCIe 100GBASE-SX/LX Server Adapter

### Copper NIC

- § LR-LINK PCI 10/100Mbps Desktop Adapter
- § LR-LINK PCIe 10/100Mbps Desktop Adapter
- § LR-LINK PCI 10/100/1000Mbps Desktop Adapter
- § LR-LINK PCIe 10/100/1000Mbps Desktop Adapter
- § LR-LINK PCIe 10/100/1000Mbps Server Adapter
- § LR-LINK PCIe 100/1G/10Gbps Server Adapter
- § LR-LINK PCIe 1G/2.5G/5G/10Gbps Server Adapter

## Download Drivers

To get the drivers, please visit us at <http://www.lr-link.com/support/driver.html>.

## Product Quick Guide

To know the network card basic knowledge to choose the suitable NIC you need, please visit us at: <http://www.lr-link.com/productchoose.html>.

## Customer Support

LR-LINK customer Support Services offers a broad selection of programs including phone support and warranty service. For more information, contact us at Service and availability. <http://www.lr-link.com/contactus.html>

## Shenzhen Lianrui Electronics Co.,LTD

Shenzhen Lianrui Electronics Co.,Ltd is an efficient Ethernet adapter design company with independent research and development,using Intel,Net-swift,Tehuite,Broadcom,Realtek and other manufacturers Ethernet controller, developed by our company's independent R & D design team.manufacturedbv our companv workshop. and then sell.

## Declaration

Our products specifications come from modifying the chip manufacturer's specifications released. Product features, technical parameters, technology right, intellectualproperty rights and brand names etc.mentioned in specifications are just referenced only.There is no infringement meaning.If there is any important andsensitive content related, please contact our Lianrui company, we'll delete them, Thank you.

---

SHENZHEN LIANRUI ELECTRONICS CON.,LTD

ADD:C4 Bldg.,Xintang Industry Zone,Baishixia FuyongTown,Baoan District Shenzhen China

Tel:+86(0)755-33671531 33671533 Fax:+86(0)755-29082065

Product Sales [sales@lr-link.com](mailto:sales@lr-link.com)

Technical Support [support@lr-link.com](mailto:support@lr-link.com)

WEB [www.lr-link.com](http://www.lr-link.com)



Copyright © Shenzhen Lianrui Electronics CO.,LTD,2006-2019. All rights reserved