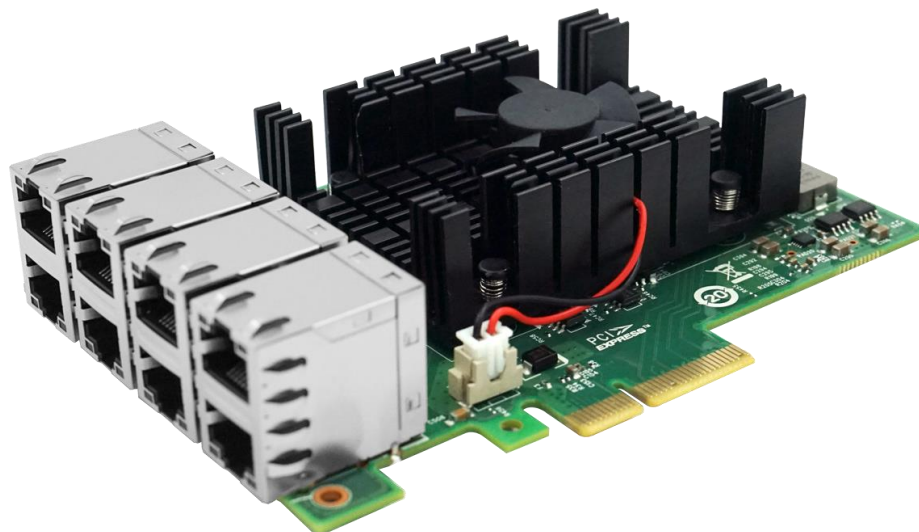


LRES2008PT

— PCIe x4 Eight-port Copper 1G Ethernet Network Adapter (Intel I350 Based)

Overview



LRES2008PT is a PCI Express x4 eight-port Gigabit Ethernet network adapter independently developed by Shenzhen Lianrui Electronics Co., Ltd. based on the Intel I350 chip solution, and is compatible with PCIe x8 and x16 channels. The design of this adapter card is mainly applied to the Internet of Things, industrial field visual inspection servers and equipment, visual field clients, fast-moving Ethernet data transmission equipment, etc., and is also suitable for ordinary servers. This adapter card has integrated hardware acceleration function and can perform TCP / UDP / IP checksum offload and TCP segmentation tasks. The host processing technology can offload the accelerator, and the host processing technology can offload the accelerator, freeing up CPU resources to free up more CPU resources to process other applications. This adapter card is an ideal solution for deploying multiple networks and deploying critical network applications and environments on high-performance servers.

LRES2008PT is developed on the basis of Intel Ethernet MAC + PHY (Media Access Controller and Physical Interface Transceiver) controller, which allows eight ports to work in full-duplex mode at the same time in a Gigabit Ethernet connection. In order to achieve high-performance network communication, the bandwidth can also be expanded through link aggregation and the PCI Express channel resources on the host are saved without occupying the bus bandwidth.

Key Features

- 1. The use of large high-end high-efficiency radiators can effectively solve the problem of adapter heat dissipation in the case of poor heat dissipation environment, effectively guarantee the stable operation of the adapter card for a long time;
- 2. Self-adaptive to the connection rate of external equipment, up to 8 1000M working at the same time without affecting the communication performance;
- 3. Using compact 8-port Gigabit high-quality connectors to ensure communication quality;
- 4. Carefully selected RJ45 connectors with thickened and heavy gold to ensure more firm and reliable connectivity;
- 5. The design of eight 8-Pin RJ45 connectors can better save the precious PCIe slot resources of the motherboard.

Specifications

Controller	Intel I350
Baffle Height	*
Power Consumption	12.0W
System Support	Windows XP/Vista7/8/8.1/10
	Windows Server 2003 R2/2008 R2/2012 R2/2016 R2/2019 R2;
	Linux Stable Kernel version 2.6.32.x/3.x/4.x/5.x or later;
	Linux CentOS/RHEL 6.x / 7.x or later;
	Ubuntu 14.x/15.x/16.x or later;
	VMware ESX/ESXi 4.x/5.x/6.x or later
Bus Type	PCI Express v2.1 (2.5GT/s & 5.0GT/s) x4, compatible with x8/x16;
Data rate supported per port	10\100\1000M
Connector	8*RJ45

Technical Features

Protocol Support	IEEE 802.3ab 1000BASE-T Gigabit Ethernet IEEE 802.3u 100BASE-TX Fast Ethernet IEEE 802.1Q VLANs IEEE 802.3x IEEE 1588 IEEE 802.3az - Energy Efficient Ethernet (EEE)
iSCSI	No
WoL	No
Jumbo Frames	YES
DPDK	Yes
PXE	Yes
FCoE	No

Environment Features

Operating Temperature	0°C to +55°C (-40°F to +131°F)
Storage Temperature	-55°C to +105°C (-67°F to +221°F)
Storage Humidity	Maximum: 90% non-condensing relative humidity at 35 °C

Physical Features

Size(mm)	133*120*38
Weight(g)	*

LED Indicators

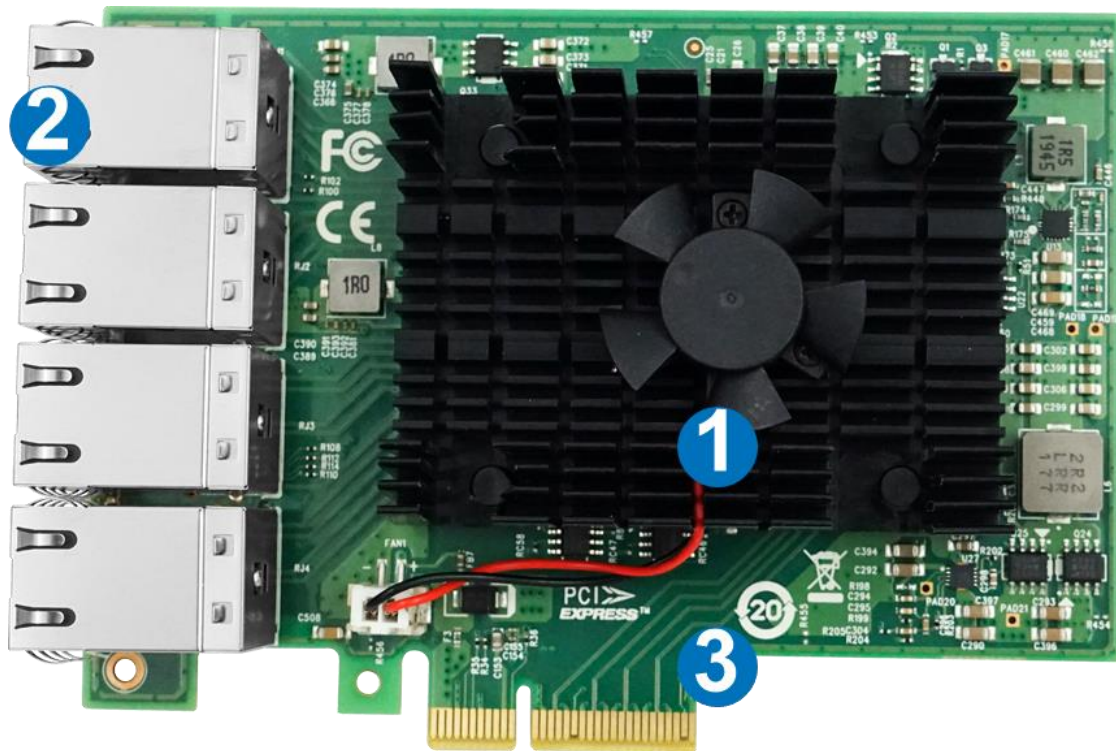
LED Indicators	1000Mbps, Green + Green
	1000Mbps, Yellow + Green
	10Mbps, Green

Order Information

P/N	Description
LRES2008PT	PCIe x4 eight-port Copper 1G ethernet network adapter 8*RJ45 (Intel I350 Based)

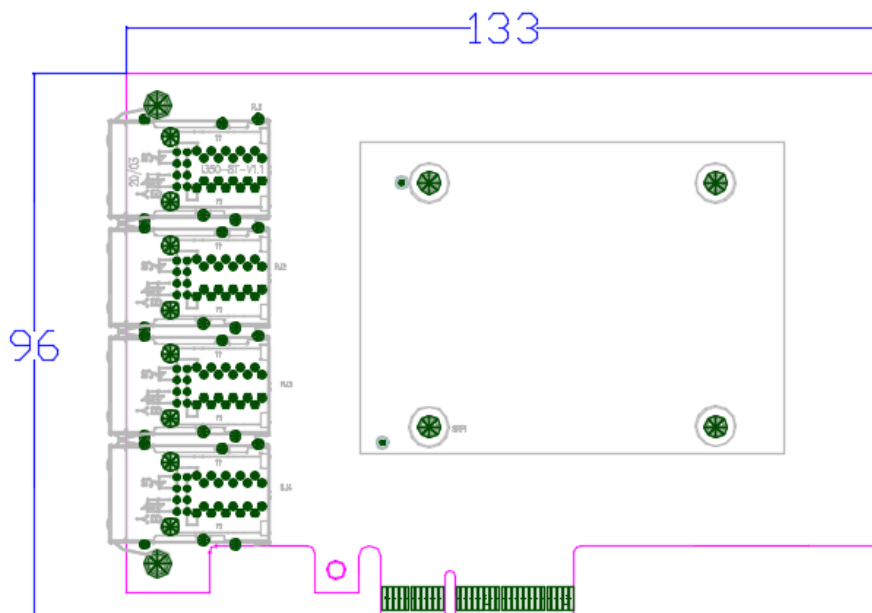
PS: Above details are only for reference, if there is any change, no prior notice.

Product Structure



1. Heat Sink
2. 8*1G RJ45 Connector
3. PCIe x8 Connector

PS: Above details are only for reference, if there is any change, no prior notice.



PS: Above details are only for reference, if there is any change, no prior notice.

Companion Products

Fiber NIC

- § LR-LINK PCI 100FX Desktop Adapter
- § LR-LINK PCIe 100FX Desktop Adapter
- § LR-LINK PCI 1000BASE-SX/LX Desktop Adapter
- § LR-LINK PCIe 1000BASE-SX/LX Desktop Adapter
- § LR-LINK PCIe 1000BASE-SX/LX Server Adapter
- § LR-LINK PCIe 10GBASE-SX/LX Server Adapter
- § LR-LINK PCIe 25GBASE-SX/LX Server Adapter
- § LR-LINK PCIe 40GBASE-SX/LX Server Adapter
- § LR-LINK PCIe 100GBASE-SX/LX Server Adapter

Copper NIC

- § LR-LINK PCI 10/100Mbps Desktop Adapter
- § LR-LINK PCIe 10/100Mbps Desktop Adapter
- § LR-LINK PCI 10/100/1000Mbps Desktop Adapter
- § LR-LINK PCIe 10/100/1000Mbps Desktop Adapter
- § LR-LINK PCIe 10/100/1000Mbps Server Adapter
- § LR-LINK PCIe 100/1G/10Gbps Server Adapter
- § LR-LINK PCIe 1G/2.5G/5G/10Gbps Server Adapter

Download Drivers

To get the drivers, please visit us at <http://www.lr-link.com/support/driver.html>.

Product Quick Guide

To know the network card basic knowledge to choose the suitable NIC you need, please visit us at: <http://www.lr-link.com/productchoose.html>.

Customer Support

LR-LINK customer Support Services offers a broad selection of programs including phone support and warranty service. For more information, contact us at Service and availability. <http://www.lr-link.com/contactus.html>

Shenzhen Lianrui Electronics Co.,LTD.

Shenzhen Lianrui Electronics Co.,Ltd is an efficient Ethernet adapter design company with independent research and development,using Intel,Net-swift,Tehuite,Broadcom,Realtek and other manufacturers Ethernet controller, developed by our company's independent R & D design team,manufacturedby our company workshop, and then sell.

Declaration

Our products specifications come from modifying the chip manufacturer's specifications released. Product features, technical parameters, technology right, intellectualproperty rights and brand names etc.mentioned in specifications are just referenced only.There is no infringement meaning.If there is any important andsensitive content related, please contact our Lianrui company, we'll delete them, Thank you.

SHENZHEN LIANRUI ELECTRONICS CON.,LTD.

ADD:C4 Bldg.,Xintang Industry Zone,Baishixia FuyongTown,Baoan District Shenzhen China

Tel:+86(0)755-33671531 33671533 Fax:+86(0)755-29082065

Product Sales lrlink@lr-link.com

Technical Support support@lr-link.com

WEB www.lr-link.com

LR-LINK[®]
Professional Ethernet Solutions Supplier

Copyright © Shenzhen Lianrui Electronics CO.,LTD,2006-2020. All rights reserved