

LRES2006PT

— PCIe x4 Six Port Copper Gigabit Ethernet Network Adapter (Intel I350 Based)

Overview



LRES2006PT is a PCI Express x4 six-port gigabit ethernet network adapter independently developed by Shenzhen Lianrui Electronics Co., Ltd. based on the Intel I350 chip solution. It is also compatible with PCIe x8 and x16 channels. The server adapter card design is mainly applied to servers and high-end devices. The server adapter is optimized and its performance is improved, so that system I/O is no longer the bottleneck of high-end network applications. The adapter can be bundled into multiple groups at the same time to achieve fault tolerance and redundancy to expand network bandwidth and ensure network performance. It can automatically detect and implement communication from the faulty port to other members in the same group to continue operation. To achieve uninterrupted high performance communication.

The adapter has integrated hardware acceleration and is capable of performing TCP/UDP/IP checksum offloading and TCP segmentation tasks. The host processing technology can offload the accelerator, and the host processing technology can offload the accelerator and release the CPU resources to free up more CPU resources to process other applications. This adapter is the ideal solution for deploying multiple networks and deploying critical network applications and environments on high-performance servers.

Developed on the Intel I350 Ethernet MAC+PHY (Media Access Controller and Physical Interface Transceiver) controller, the LRES2006PT allows up to six ports at full time in a Gigabit Ethernet connection. The working mode works to adapt to high-performance network communication, and can extend the bandwidth through link aggregation and save PCI Express channel resources without occupying bus bandwidth. The LRES2006PT supports both PCI*SIG SR-IOV (Single Root I/O Virtual and Sharing Specification). The larger heat sink can effectively solve the heat dissipation problem of the adapter under the internal closed machine, which can effectively ensure the stable operation of the adapter card for a long time.

Key Features

1. The larger heat sink can effectively solve the heat dissipation problem of the adapter in the case of poor heat dissipation environment, and effectively ensure the stable operation of the adapter card for a long time.
2. Carefully selected thickened gold RJ45 connector to ensure a more secure and reliable connectivity;
3. 6*8-pin RJ45 connectors are designed to save the motherboard's valuable PCIe slot resources.

Specifications

Controller	Intel I350
Baffle Height	Full height
Power Consumption	11.0W
System Support	Windows XP/Vista7/8/8.1/10
	Windows Server 2003 R2/2008 R2/2012 R2/2016 R2/2019 R2;
	Linux Stable Kernel version 2.6.32.x/3.x/4.x or later;
	Linux CentOS/RHEL 6.x / 7.x or later;
	Ubuntu 14.x/15.x/16.x or later;
	VMware ESX/ESXi 4.x/5.x/6.x or later
Bus Type	PCIe v2.0 x4, compatible with x8、x16
Data rate supported per port	10/100/1000MbE
Connector	6*8-Pin RJ45

Technical Features

Protocol Support	IEEE 802.3ab 1000BASE-T Gigabit Ethernet IEEE 802.3u 100BASE-TX Fast Ethernet IEEE 802.3z IEEE 802.1Q VLANs IEEE 802.3x IEEE 1588 IEEE 802.3az - Energy Efficient Ethernet (EEE)
iSCSI	No
WoL	No
Jumbo Frames	YES
DPDK	Yes
PXE	Yes
FCoE	No

Environment Features

Operating Temperature	0 °C to 55 °C (32 °F to +131 °F)
Storage Temperature	-40 °C to +85 °C (-40 °F to +185 °F)
Storage Humidity	Maximum: 90% non-condensing relative humidity at 35 °C

Physical Features

Size(mm)	151.6*120*21
Weight(g)	*

LED Indicators

LED Indicators	1000Mbps:Yellow Link + Green Blink
	100Mbps: Green Blink 10Mbps, No

Order Information

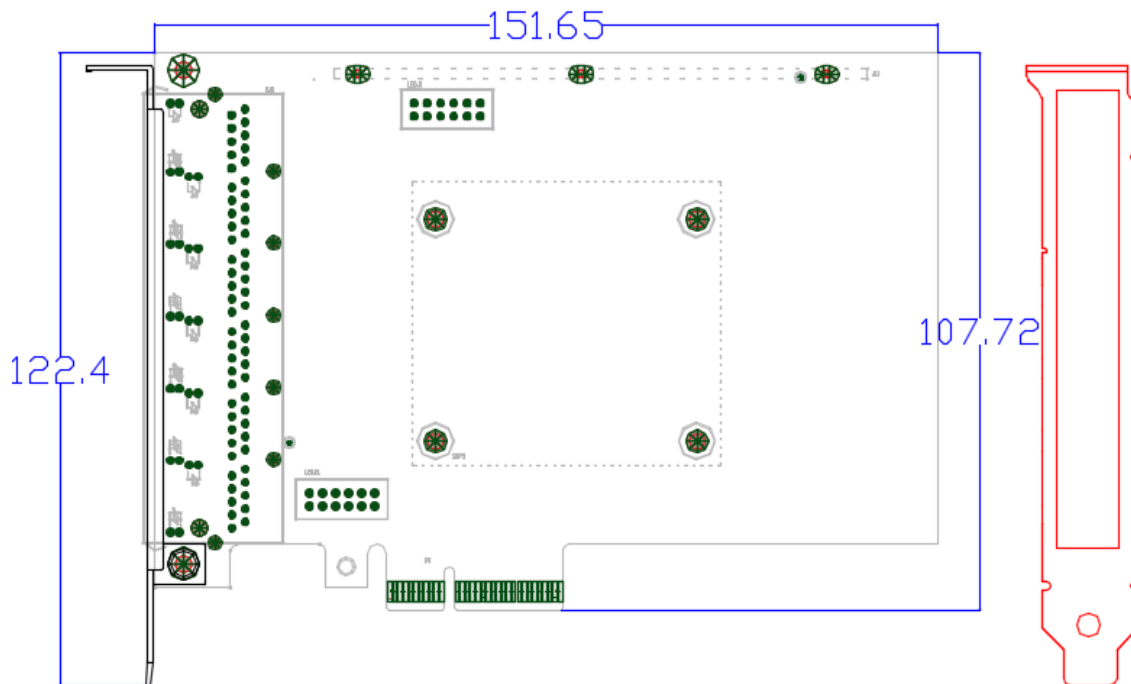
P/N	Description
LRES2006PT	PCIe x4 Six Port Copper Gigabit Ethernet Network Adapter (Intel I350 Based)

PS: Above details are only for reference, if there is any change, no prior notice.



- 1. 6*1G RJ Connector
- 2. Heat sink
- 3. PCIe x4 Bus

PS: Above details are only for reference, if there is any change, no prior notice.



PS: Above details are only for reference, if there is any change, no prior notice.

Companion Products

Fiber NIC

- § LR-LINK PCI 100FX Desktop Adapter
- § LR-LINK PCIe 100FX Desktop Adapter
- § LR-LINK PCI 1000BASE-SX/LX Desktop Adapter
- § LR-LINK PCIe 1000BASE-SX/LX Desktop Adapter
- § LR-LINK PCIe 1000BASE-SX/LX Server Adapter
- § LR-LINK PCIe 10GBASE-SX/LX Server Adapter
- § LR-LINK PCIe 25GBASE-SX/LX Server Adapter
- § LR-LINK PCIe 40GBASE-SX/LX Server Adapter
- § LR-LINK PCIe 100GBASE-SX/LX Server Adapter

Copper NIC

- § LR-LINK PCI 10/100Mbps Desktop Adapter
- § LR-LINK PCIe 10/100Mbps Desktop Adapter
- § LR-LINK PCI 10/100/1000Mbps Desktop Adapter
- § LR-LINK PCIe 10/100/1000Mbps Desktop Adapter
- § LR-LINK PCIe 10/100/1000Mbps Server Adapter
- § LR-LINK PCIe 100/1G/10Gbps Server Adapter
- § LR-LINK PCIe 1G/2.5G/5G/10Gbps Server Adapter

Download Drivers

To get the drivers, please visit us at <http://www.lr-link.com/support/driver.html>.

Product Quick Guide

To know the network card basic knowledge to choose the suitable NIC you need, please visit us at: <http://www.lr-link.com/productchoose.html>.

Customer Support

LR-LINK customer Support Services offers a broad selection of programs including phone support and warranty service. For more information, contact us at Service and availability. <http://www.lr-link.com/contactus.html>

Shenzhen Lianrui Electronics Co.,LTD.

Shenzhen Lianrui Electronics Co.,Ltd is an efficient Ethernet adapter design company with independent research and development,using Intel,Net-swift,Tehuite,Broadcom,Realtek and other manufacturers Ethernet controller, developed by our company's independent R & D design team,manufacturedby our company workshop, and then sell.

Declaration

Our products specifications come from modifying the chip manufacturer's specifications released. Product features, technical parameters, technology right, intellectualproperty rights and brand names etc.mentioned in specifications are just referenced only.There is no infringement meaning.If there is any important andsensitive content related, please contact our Lianrui company, we'll delete them, Thank you.

SHENZHEN LIANRUI ELECTRONICS CON.,LTD.

ADD:C4 Bldg.,Xintang Industry Zone,Baishixia FuyongTown,Baoan District Shenzhen China

Tel:+86(0)755-33671531 33671533 Fax:+86(0)755-29082065

Product Sales lrlink@lr-link.com

Technical Support support@lr-link.com

WEB www.lr-link.com

LR-LINK[®]
Professional Ethernet Solutions Supplier

Copyright © Shenzhen Lianrui Electronics CO.,LTD,2006-2020. All rights reserved