

LREM3500PF-4SFP

— PCIe x8 Quad-port Mezzanine 1G SFP Ethernet Network Adapter (Intel I350 Based)

Overview



LREM3500PF-4SFP is a PCI Express x4 (x8 interface) quad-port mezzanine Gigabit Ethernet network adapter developed by Shenzhen Lianrui Electronics Co., Ltd. based on the Intel I350 main control solution. It is applied to data transmission such as firewall, gatekeeper, data monitoring, etc., and is suitable for non-stop operation all day.

The Intel I350 main control chip is adopted, which has a wide range of system compatibility and stability. Each network port has an independent Gigabit channel network port and works independently of each other.

Support the safe transmission of Gigabit optical fiber at the application site. In the Gigabit Ethernet connection, four gigabit fiber ports can be allowed to work in full-duplex mode at the same time, and four network ports can be aggregated to increase network traffic bandwidth or any network port can be used for aggregation. Can save PCI Express channel resources in the space of 1U chassis.

Key Features

- Used in data transmission such as firewall, gatekeeper, data monitoring, etc.
- Has a wide range of system compatibility and stability.
- Each network port has an independent Gigabit channel network port and works independently of each other.
- Support aggregation to increase network traffic bandwidth.

Specifications

| | |
|------------------------------|--|
| Controller | Intel I350 |
| Baffle Height | * |
| Power Consumption | 3.2W |
| System Support | Windows XP/Vista7/8/8.1/10 |
| | Windows Server 2003 R2/2008 R2/2012 R2/2016 R2/2019 R2; |
| | Linux Stable Kernel version 2.6.32.x/3.x/4.x/5.x or later; |
| | Linux CentOS/RHEL 6.x / 7.x or later; |
| | Ubuntu 14.x/15.x/16.x or later; |
| | VMware ESX/ESXi 4.x/5.x/6.x or later |
| Bus Type | PCI Express v2.1 (2.5GT/s & 5.0GT/s) x4 (x8 interface) ; |
| Data rate supported per port | 1000MbE |
| Connector | 4*SFP |

Technical Features

| | |
|------------------|---|
| Protocol Support | IEEE 802.3z 1000BASE-X Gbit/s Ethernet IEEE 802.1Q VLANs IEEE 802.3x IEEE 1588 IEEE 802.3az - Energy Efficient Ethernet (EEE) IEEE 802.3az - Energy Efficient Ethernet (EEE) |
| iSCSI | No |
| WoL | No |
| Jumbo Frames | YES |
| DPDK | Yes |
| PXE | Yes |
| FCoE | No |

Environment Features

| | |
|-----------------------|--|
| Operating Temperature | 0 °C to +55 °C (-40 °F to +131 °F) |
| Storage Temperature | -55 °C to +105 °C (-67 °F to +221 °F) |
| Storage Humidity | Maximum: 90% non-condensing relative humidity at 35 °C |

Physical Features

| | |
|-----------|--------|
| Size(mm) | 110*68 |
| Weight(g) | * |

LED Indicators

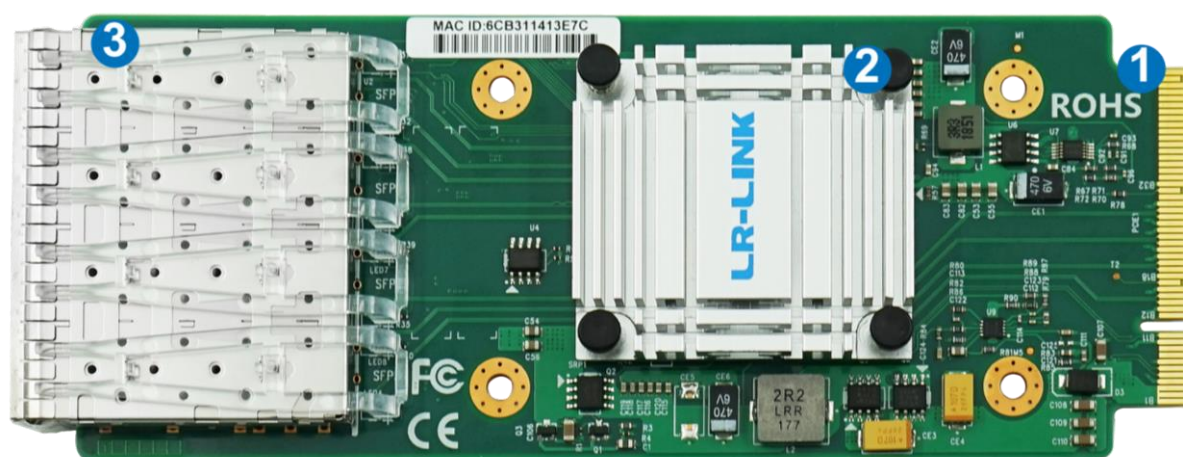
| | |
|----------------|------------------------------------|
| LED Indicators | 1000Mbps:Yellow Link + Green Blink |
|----------------|------------------------------------|

Order Information

| P/N | Description |
|-----------------|--|
| LREM3500PF-4SFP | PCIe x8 Quad-port Mezzanine 1G SFP Ethernet Network Adapter (Intel I350 Based) |

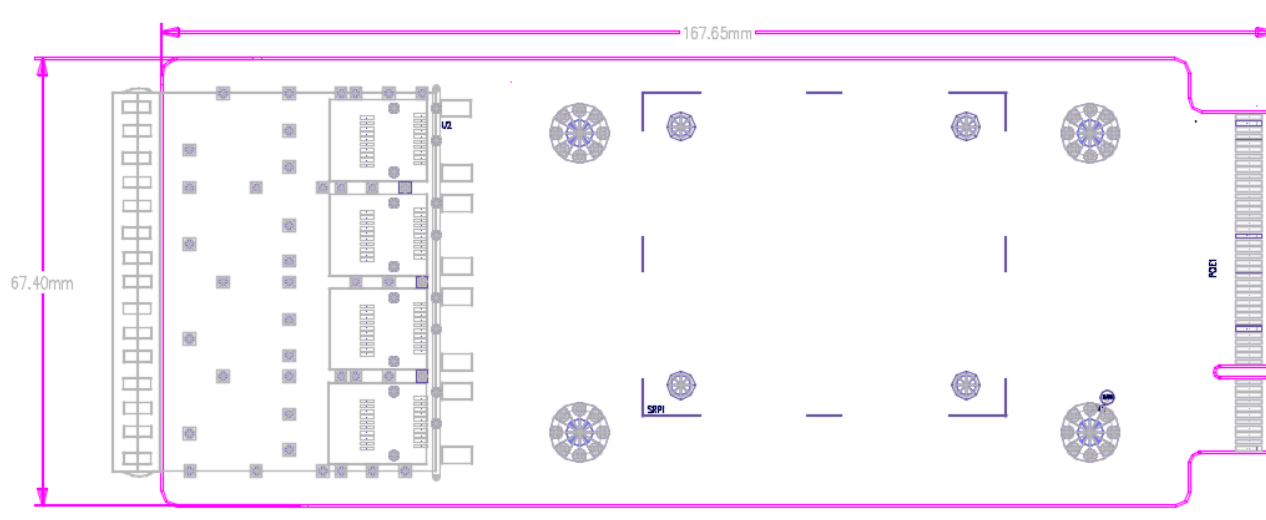
PS: Above details are only for reference, if there is any change,no prior notice.

Product Structure



1. PCIe x8 Connector
2. Heat Sink
3. 4*1G SFP Connector

PS: Above details are only for reference, if there is any change,no prior notice.



PS: Above details are only for reference, if there is any change, no prior notice.

Companion Products

Fiber NIC

- § LR-LINK PCI 100FX Desktop Adapter
- § LR-LINK PCIe 100FX Desktop Adapter
- § LR-LINK PCI 1000BASE-SX/LX Desktop Adapter
- § LR-LINK PCIe 1000BASE-SX/LX Desktop Adapter
- § LR-LINK PCIe 1000BASE-SX/LX Server Adapter
- § LR-LINK PCIe 10GBASE-SX/LX Server Adapter
- § LR-LINK PCIe 25GBASE-SX/LX Server Adapter
- § LR-LINK PCIe 40GBASE-SX/LX Server Adapter
- § LR-LINK PCIe 100GBASE-SX/LX Server Adapter

Copper NIC

- § LR-LINK PCI 10/100Mbps Desktop Adapter
- § LR-LINK PCIe 10/100Mbps Desktop Adapter
- § LR-LINK PCI 10/100/1000Mbps Desktop Adapter
- § LR-LINK PCIe 10/100/1000Mbps Desktop Adapter
- § LR-LINK PCIe 10/100/1000Mbps Server Adapter
- § LR-LINK PCIe 100/1G/10Gbps Server Adapter
- § LR-LINK PCIe 1G/2.5G/5G/10Gbps Server Adapter

Download Drivers

To get the drivers, please visit us at <http://www.lr-link.com/support/driver.html>.

Product Quick Guide

To know the network card basic knowledge to choose the suitable NIC you need, please visit us at: <http://www.lr-link.com/productchoose.html>.

Customer Support

LR-LINK customer Support Services offers a broad selection of programs including phone support and warranty service. For more information, contact us at Service and availability. <http://www.lr-link.com/contactus.html>

Shenzhen Lianrui Electronics Co.,LTD.

Shenzhen Lianrui Electronics Co.,Ltd is an efficient Ethernet adapter design company with independent research and development,using Intel,Net-swift,Tehuite,Broadcom,Realtek and other manufacturers Ethernet controller, developed by our company's independent R & D design team,manufacturedby our company workshop, and then sell.

Declaration

Our products specifications come from modifying the chip manufacturer's specifications released. Product features, technical parameters, technology right, intellectualproperty rights and brand names etc.mentioned in specifications are just referenced only.There is no infringement meaning.If there is any important andsensitive content related, please contact our Lianrui company, we'll delete them, Thank you.

SHENZHEN LIANRUI ELECTRONICS CON.,LTD.

ADD:C4 Bldg.,Xintang Industry Zone,Baishixia FuyongTown,Baoan District Shenzhen China

Tel:+86(0)755-33671531 33671533 Fax:+86(0)755-29082065

Product Sales lrlink@lr-link.com

Technical Support support@lr-link.com

WEB www.lr-link.com



Copyright © Shenzhen Lianrui Electronics CO.,LTD,2006-2020. All rights reserved