

LRES2008PT-POE

— PCIe x4 Eight-port PoE + Gigabit Ethernet Frame Grabber (Intel I350 Based)

Overview



LRES2008PT-POE is a PCI Express x4 eight-port PoE + Gigabit Ethernet image acquisition card independently developed by Shenzhen Lianrui Electronics Co., Ltd. based on the Intel I350 chip solution, and is compatible with PCIe x8 and x16 channels. The server adapter card design is mainly designed for industrial field visual inspection servers and equipment, visual field clients, fast mobile Ethernet data transmission equipment, etc., and is also suitable for ordinary servers. This adapter card has integrated hardware acceleration function and can perform TCP / UDP / IP checksum offload and TCP segmentation tasks. The host processing technology can offload the accelerator, and the host processing technology can offload the accelerator, freeing up CPU resources to free up more CPU resources to process other applications. This adapter card is an ideal solution for deploying multiple networks and deploying critical network applications and environments on high-performance servers.

LRES2008PT-POE was developed based on the Intel I350 Ethernet MAC + PHY (Media Access Controller and Physical Interface Transceiver) controller, which can allow eight ports to be fully dual at the same time in the highest Gigabit Ethernet connection. The work mode of the worker works to adapt to high-performance network communication, which can expand the bandwidth through link aggregation and save PCI Express channel resources, while not occupying the bus bandwidth.

Key Features

- 1. The single port PoE output power consumption is up to 30W, and it provides an external large 4Pin power supply supply interface;
- 2. Self-adaptive power consumption output required by external equipment;
- 3. The adapter card adopts a wider RJ45 pitch design;
- 4. A larger heat sink can effectively solve the problem of adapter heat dissipation in the case of poor heat dissipation environment, effectively guarantee the stable operation of the adapter card for a long time;
- 5. Carefully selected RJ45 connectors with thickened and heavy gold to ensure more firm and reliable connectivity;
- 6. The design of eight 8-Pin RJ45 connectors can better save the precious PCIe slot resources of the motherboard.

Specifications

| | |
|------------------------------|--|
| Controller | Intel I350 |
| Baffle Height | The default is not equipped with a baffle, it is optional! |
| Power Consumption | 12.0W |
| System Support | Windows XP/Vista7/8/8.1/10 |
| | Windows Server 2003 R2/2008 R2/2012 R2/2016 R2/2019 R2; |
| | Linux Stable Kernel version 2.6.32.x/3.x/4.x/5.x or later; |
| | Linux CentOS/RHEL 6.x / 7.x or later; |
| | Ubuntu 14.x/15.x/16.x or later; |
| | VMware ESX/ESXi 4.x/5.x/6.x or later |
| Bus Type | PCI Express v2.1 (2.5GT/s & 5.0GT/s) x4, compatible with x8\x16; |
| Data rate supported per port | 10\100\1000M |
| POE Output (max) | 30W / port |
| Connector | 8*RJ45 |

Technical Features

| | |
|------------------|---|
| Protocol Support | IEEE 802.3ab 1000BASE-T Gigabit Ethernet IEEE 802.3u 100BASE-TX Fast Ethernet IEEE 802.3af Power over Ethernet IEEE 802.3at Power over Ethernet enhancements IEEE 802.1Q VLANs IEEE 802.3x Full Duplex and flow contro IEEE 802.3az - Energy Efficient Ethernet (EEE) |
| iSCSI | No |
| WoL | No |
| Jumbo Frames | YES |
| DPDK | Yes |
| PXE | Yes |
| FCoE | No |

Environment Features

| | |
|-----------------------|--|
| Operating Temperature | 0°C to +55°C (-40°F to +131°F) |
| Storage Temperature | -55°C to +105°C (-67°F to +221°F) |
| Storage Humidity | Maximum: 90% non-condensing relative humidity at 35 °C |

Physical Features

| | |
|-----------|---------|
| Size(mm) | 186*105 |
| Weight(g) | * |

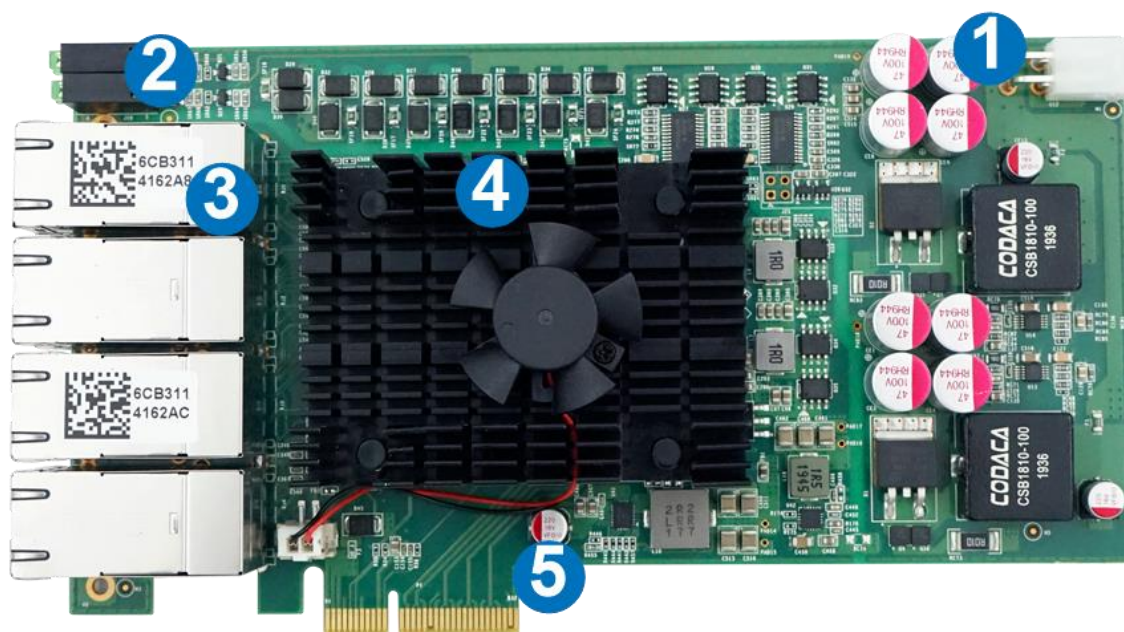
LED Indicators

| | |
|----------------|---------------------------|
| LED Indicators | POE: Green |
| | 1000Mbps, Yellow + Green |
| | 10/100Mbps, Green + Green |
| | 10Mbps, Green |

Order Information

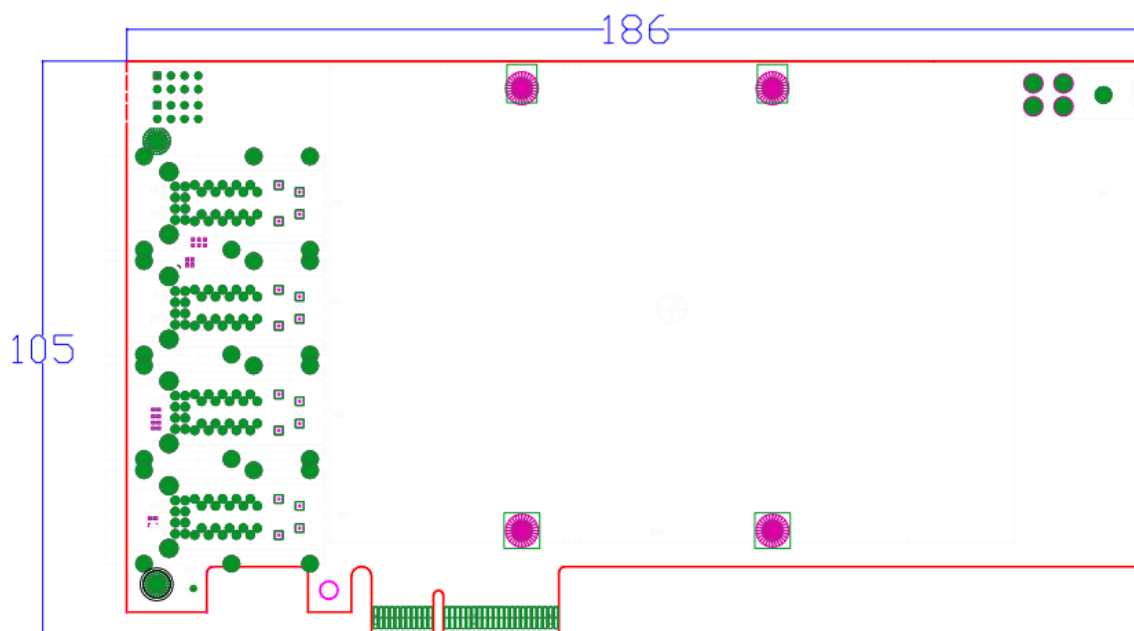
| P/N | Description |
|----------------|---|
| LRES2008PT-POE | PCIe x4 Eight-port PoE + Gigabit Ethernet Frame Grabber 8*RJ45 (Intel I350 Based) |

Product Structure



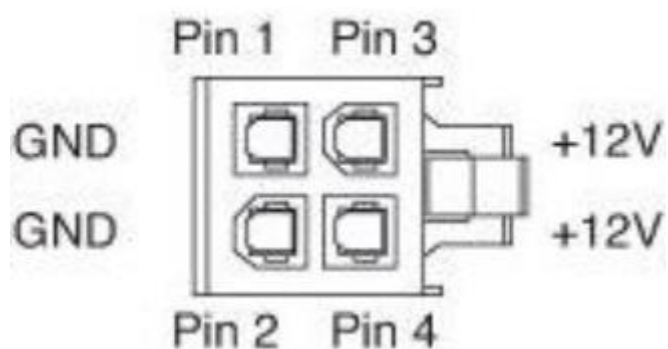
1. +12V ATX Connector
2. POE Indicators
3. 8*1G RJ45 Connector
4. Heat sink
5. PCIe x4 Connector
- 6.

PS: Above details are only for reference, if there is any change, no prior notice.



PS: Above details are only for reference, if there is any change, no prior notice.

+12V ATX Connector



Companion Products

Fiber NIC

- § LR-LINK PCI 100FX Desktop Adapter
- § LR-LINK PCIe 100FX Desktop Adapter
- § LR-LINK PCI 1000BASE-SX/LX Desktop Adapter
- § LR-LINK PCIe 1000BASE-SX/LX Desktop Adapter
- § LR-LINK PCIe 1000BASE-SX/LX Server Adapter
- § LR-LINK PCIe 10GBASE-SX/LX Server Adapter
- § LR-LINK PCIe 25GBASE-SX/LX Server Adapter
- § LR-LINK PCIe 40GBASE-SX/LX Server Adapter
- § LR-LINK PCIe 100GBASE-SX/LX Server Adapter

Copper NIC

- § LR-LINK PCI 10/100Mbps Desktop Adapter
- § LR-LINK PCIe 10/100Mbps Desktop Adapter
- § LR-LINK PCI 10/100/1000Mbps Desktop Adapter
- § LR-LINK PCIe 10/100/1000Mbps Desktop Adapter
- § LR-LINK PCIe 10/100/1000Mbps Server Adapter
- § LR-LINK PCIe 100/1G/10Gbps Server Adapter
- § LR-LINK PCIe 1G/2.5G/5G/10Gbps Server Adapter

Download Drivers

To get the drivers, please visit us at <http://www.lr-link.com/support/driver.html>.

Product Quick Guide

To know the network card basic knowledge to choose the suitable NIC you need, please visit us at: <http://www.lr-link.com/productchoose.html>.

Customer Support

LR-LINK customer Support Services offers a broad selection of programs including phone support and warranty service. For more information, contact us at Service and availability. <http://www.lr-link.com/contactus.html>

Shenzhen Lianrui Electronics Co.,LTD.

Shenzhen Lianrui Electronics Co.,Ltd is an efficient Ethernet adapter design company with independent research and development,using Intel,Net-swift,Tehuite,Broadcom,Realtek and other manufacturers Ethernet controller, developed by our company's independent R & D design team,manufacturedby our company workshop, and then sell.

Declaration

Our products specifications come from modifying the chip manufacturer's specifications released. Product features, technical parameters, technology right, intellectualproperty rights and brand names etc.mentioned in specifications are just referenced only.There is no infringement meaning.If there is any important andsensitive content related, please contact our Lianrui company, we'll delete them, Thank you.

SHENZHEN LIANRUI ELECTRONICS CON.,LTD.

ADD:C4 Bldg.,Xintang Industry Zone,Baishixia FuyongTown,Baoan District Shenzhen China

Tel:+86(0)755-33671531 33671533 Fax:+86(0)755-29082065

Product Sales lrlink@lr-link.com

Technical Support support@lr-link.com

WEB www.lr-link.com



Copyright © Shenzhen Lianrui Electronics CO.,LTD,2006-2020. All rights reserved